

XC Series Round Cylinder



Features:

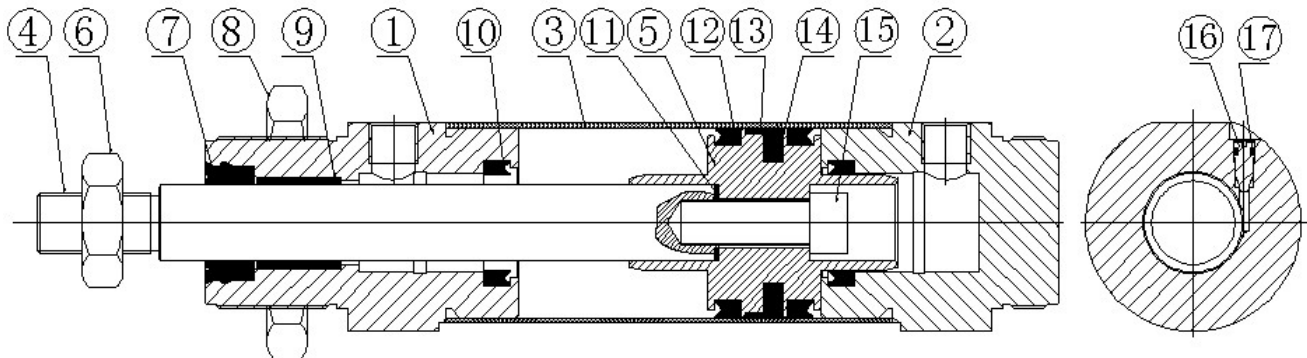
Interchangeable to FESTO CRDSW

Bores: 32~63mm

Adjustable air cushioning

Rod bearing

Materials

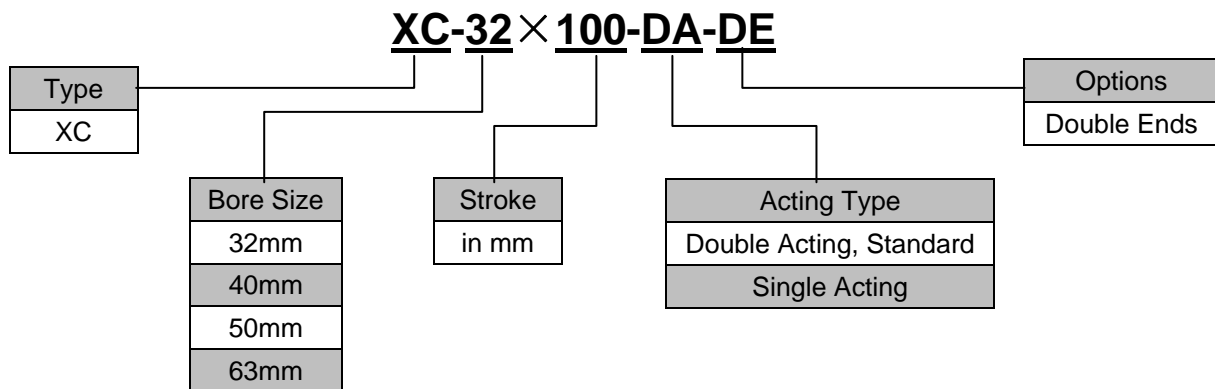


Item	Component	Material
1	Front End Cap	Aluminum Alloy
2	Rear End Cap	Aluminum Alloy
3	Tube	Stainless Steel
4	Piston Rod	Carbon Steel
5	Piston	Aluminum Alloy
6	Nut	Carbon Steel
7	Rod Sealwiper	Polyurethane
8	Nut	Carbon Steel
9	Rod Bearing	Sintered Bronze
10	Cushion Seal	NBR
11	O Ring	NBR
12	Piston Seal	NBR
13	Wear Band	PTFE
14	Magnet	Plastoferrite
15	Screw	Carbon Steel
16	Cushioning Needle	Copper
17	O Ring	NBR

Specifications

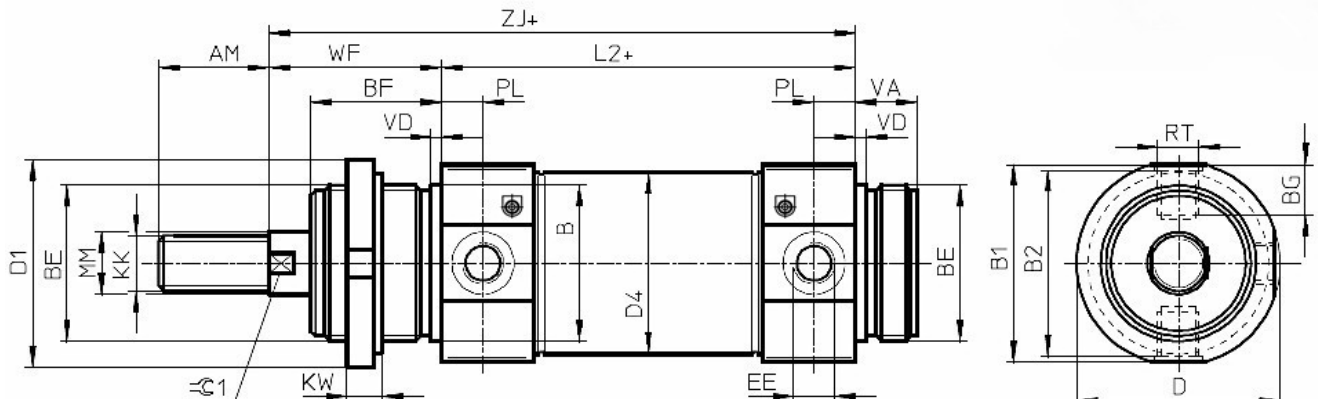
∅ [mm]	32	40	50	63
Action Type	Double- or Single-Acting			
Operating Pressure Range	1-9.0 bar			
Operating Temperature Range	0-70 °C			
Cushioning Type	Adjustable Cushioning at Both Ends			
Joints	G1/8	G1/4	G1/4	G3/8

How to Order



Magnetic pistons and adjustable air cushioning at both end are standard.

Dimensions(mm)



∅ [mm]	AM	B	B1	B2	BE	BF	BG	D	D1	D4	EE
32	20	30	38	36.8	M30×1.5	30	6.6	40	42	33.6	G1/8
40	24	38	46	44.8	M38×1.5	35	9.6	49	50	41.6	G1/4
50	32	45	57	55.8	M45×1.5	38	12.6	59	60	52.4	G1/4
63	32	45	70	67	M45×1.5	38	15.5	70	60	65.4	G3/8

∅ [mm]	KK	KW	MM	L2	RT	PL	VA	VD	WF	ZJ	☉1
32	M10×1.25	8	12	96	M8×1	9	14	2	38.2	134	10
40	M12×1.25	10	16	113	M10×1	12	16	3	45.2	158	13
50	M16×1.5	10	20	120	M12×1.5	12	18	3	50.2	170	17
63	M16×1.5	10	20	124	M14×1.5	13	18	3	50.2	174	17