

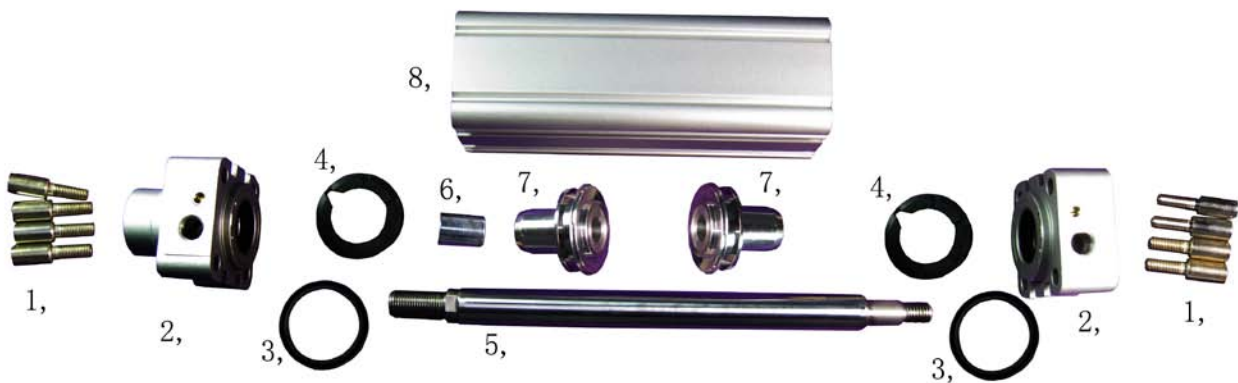
## Acculine One-Stop-Purchase Solution Application

# Air Cylinder Manufacturing Industry

Acculine aims to provide One-Stop-Purchase solution to large manufacturers in the world who are outsourcing over 75% component parts to China. Mainly, Acculine encompasses manufacturing processes such as die casting, machining, stamping and punching, sintering, and plastic injection. Purchasing from Acculine is cost-effective and efficient, instead of from many manufacturers who are responsible for only single one production process respectively.

Air cylinder manufacturing industry is one of our One-Stop-Purchase solution applications, where a large proportion of components are machinings and die castings.

### Schematic of a typical air cylinder showing main components



- 1, screws;
- 2, endcaps, front and rear;
- 3, cushioning gaskets;
- 4, cushioning washer;
- 5, steel piston rod;
- 6, bolt;
- 7, piston halves;
- 8, aluminum cylinder tube;

### Manufacturing processing involved:

- Parts 1, 5, 6, 7: Machining;
- Part 2: Die casting and machining;
- Part 3, 4: Plastic injection;
- Part 8: Aluminum extrusion.

## Acculine Precision Manufacturing Company

Room306, Bldg#22, Yaduxincun District  
888# Yinxiandadao Ave West, Ningbo  
Zhejiang Province, 315153, P.R.China  
Tel:0086-574-28887315  
Fax:0086-574-28875303  
Email:info@acculine-mfg.com  
Web:www.acculine-mfg.com



**Acculine Precision Manufacturing Company** is a Chinese professional supplier of mechanical component parts including aluminum die casting, zinc die casting, precision machining, sheet metal stamping, sheet metal punching, sheet metal deep drawing, plastic injection, metal sintering and plastic sintering, etc.

Besides our leading knowledge about products and production, another important power which help Acculine outperform the Chinese competitors is our strict quality management system. We have been in long term cooperation with many professional and demanding customers in Europe and North America many years. Through years of communication and emulation, Acculine developed the unique quality management based on western mentality of quality and service. The system ensures Acculine's leadership in the market and customers' needs to be met constantly. For details of the quality management, please visit

[http://www.acculine-mfg.com/literature/Acculine\\_Product\\_Quality\\_Management\\_Procedure\\_Flowchart.pdf](http://www.acculine-mfg.com/literature/Acculine_Product_Quality_Management_Procedure_Flowchart.pdf), and view the copy.

[China sourcing](#) [Mechanical component parts](#) [Aluminum die casting](#) [Zinc die casting](#)  
[Die Casting](#) [Precision Machining](#) [CNC machining](#) [Metal stamping](#)  
[Precision metal stamping](#) [Sheet Metal Stamping](#) [Sheet Metal Deep Draw](#)  
[Porous Plastic Sintering](#) [Metal Sintering](#) [Filter element](#) [Plastic Injection](#) [Plastic Moulding](#)